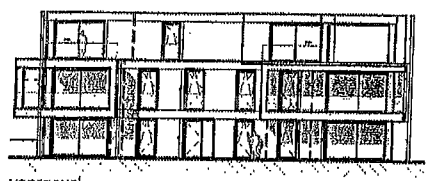


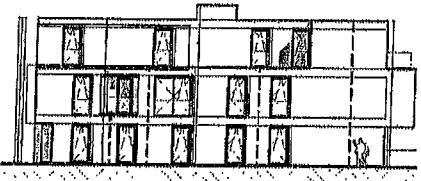
2<sup>e</sup> verdieping

RESIDENTIE JOLIES  
Gentsestraat 1, 8890 Moorslede

APP 2.2

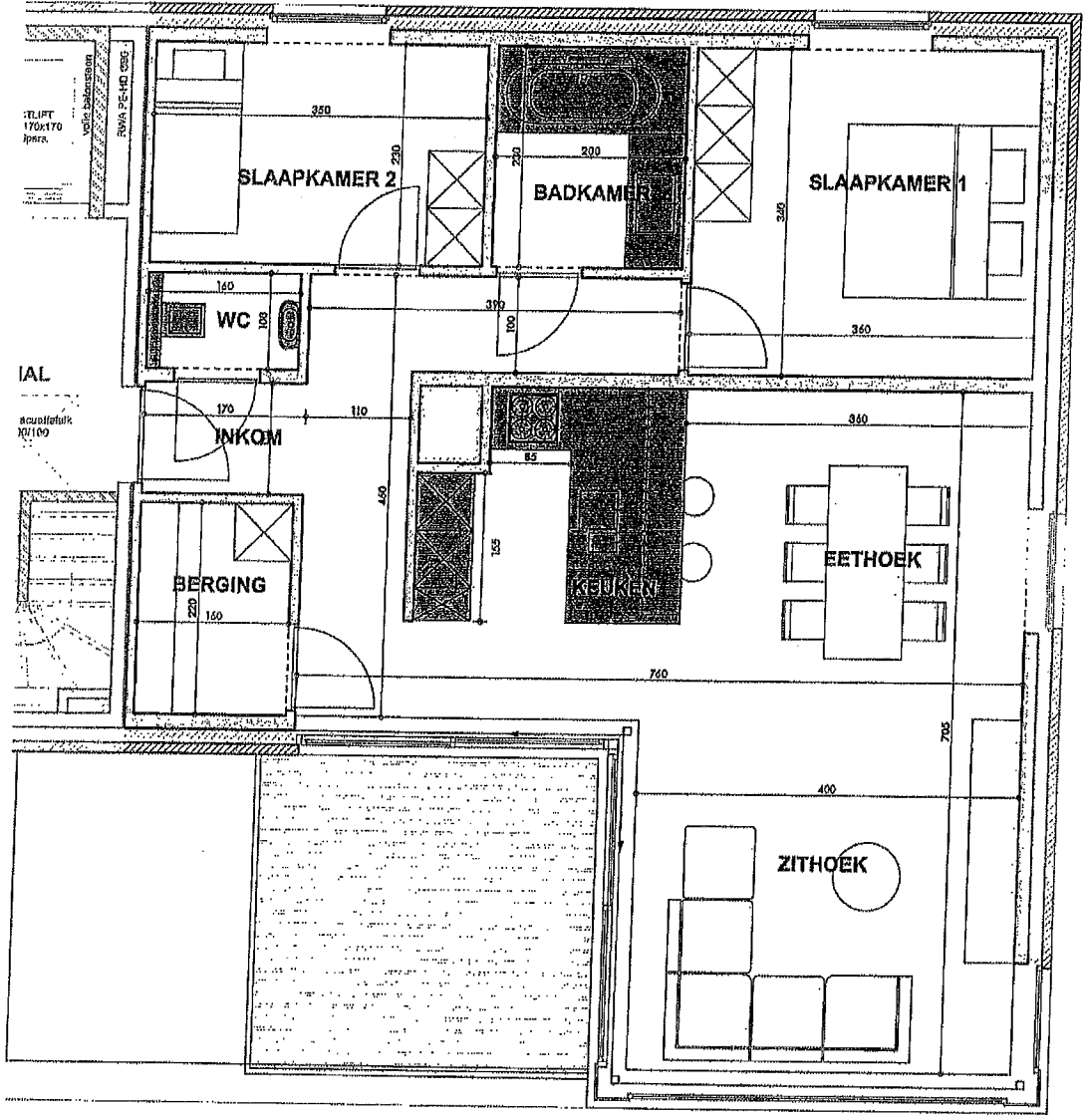


voorgevel



achtergevel

93,92 m<sup>2</sup> Oppervlakte appartement  
11,89 m<sup>2</sup> Oppervlakte terras



*[Handwritten signature]*



 WWW.GC-A.EU		RESIDENTIE JOLIES - APP. 2.2 2de verdieping		DOSSIER	160114
		VOORAFKHOED datum : .....		PLANNR	
		HANDTEKENING		SCHAAL	1/60
				DATUM	23-08-16