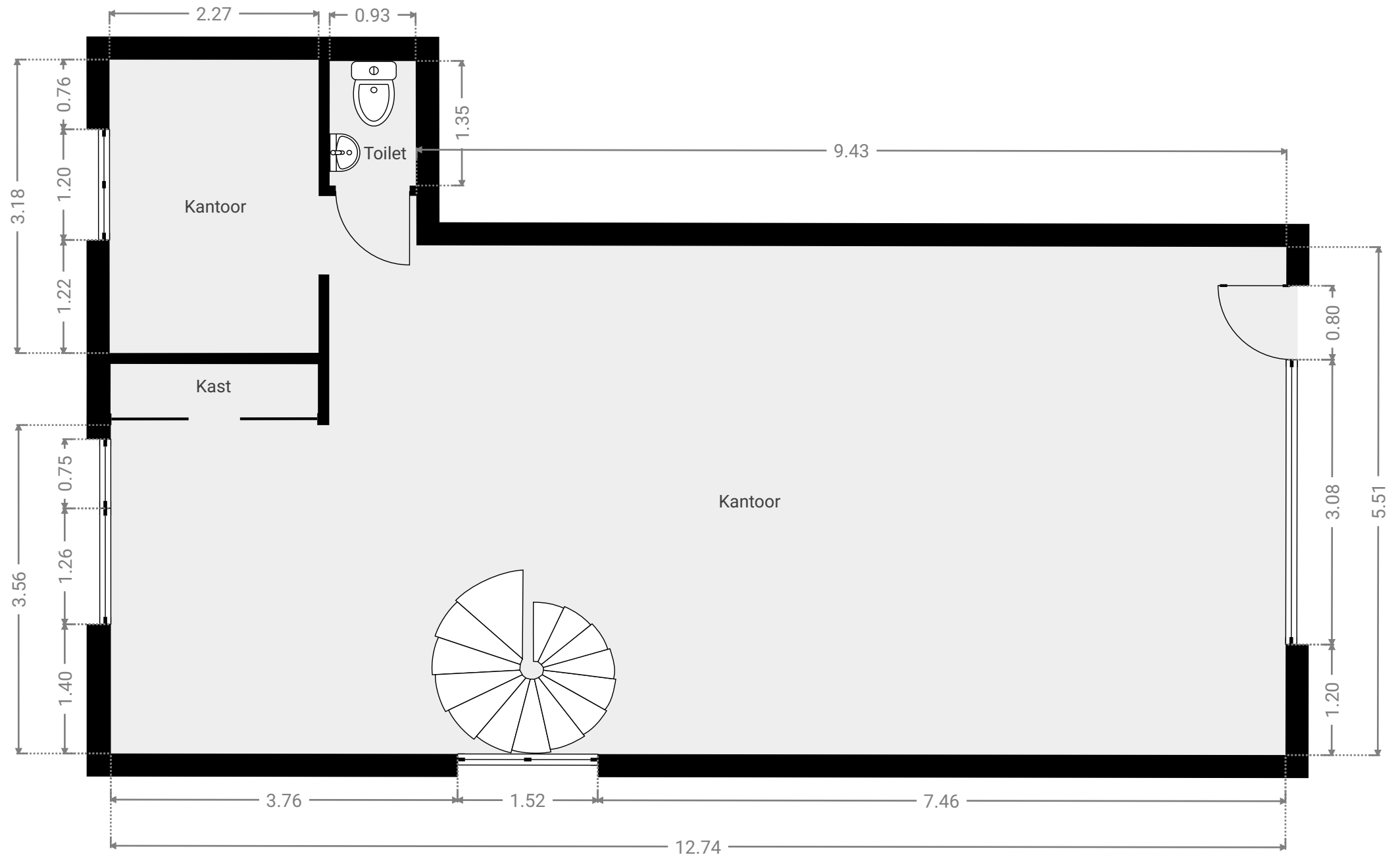


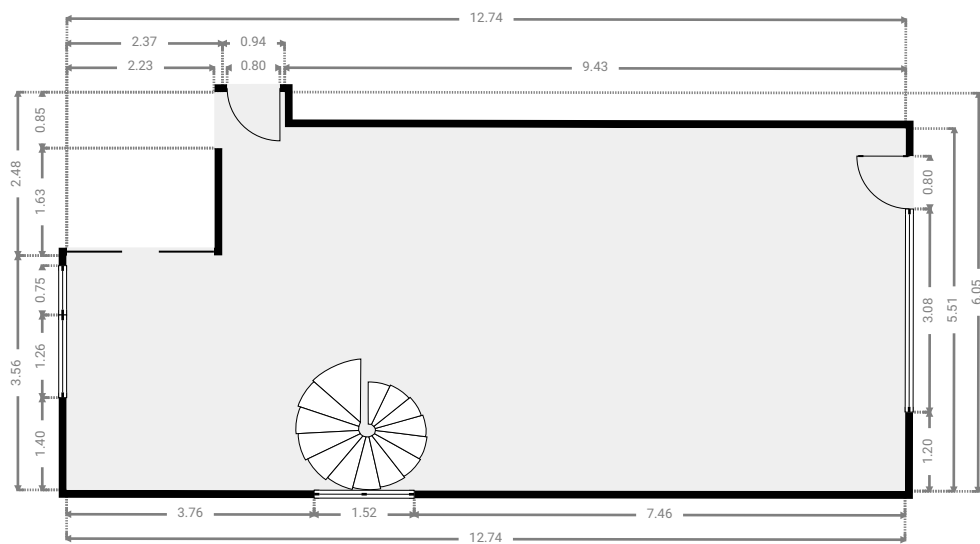
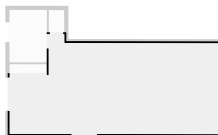
▼ Gelijkvloers



Alle afmetingen zijn louter indicatief. immotools.be

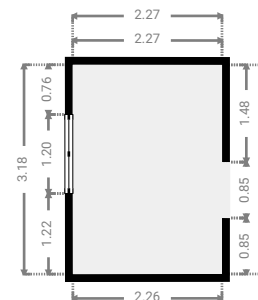
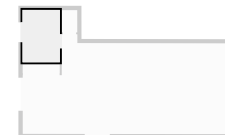
▼ **Kantoor/Gelijkvloers**

WIDTH: 12.74 m
LENGTH: 6.05 m
CEILING HEIGHT: 2.53 m
PERIMETER: 37.56 m



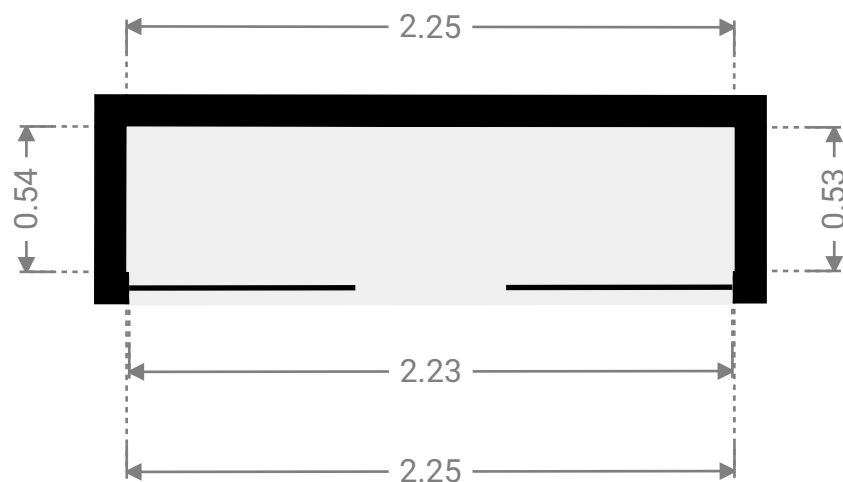
▼ **Kantoor/Gelijkvloers**

WIDTH: 2.27 m
LENGTH: 3.18 m
PERIMETER: 10.89 m



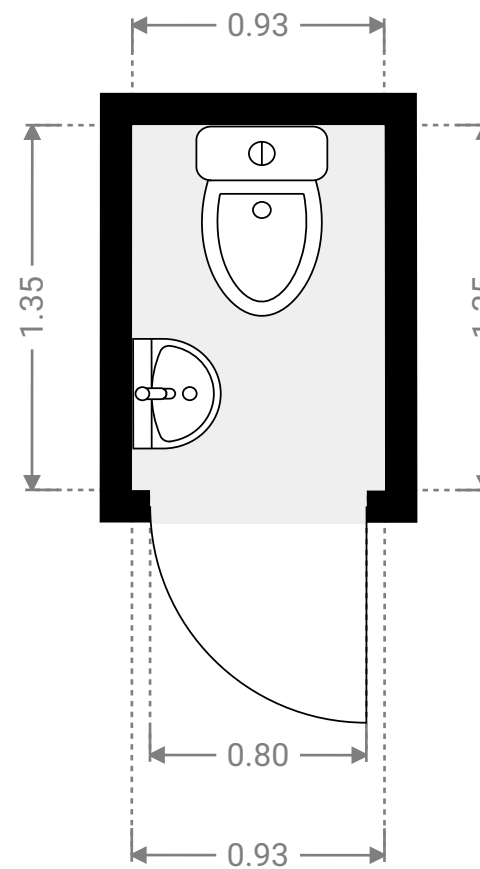
▼ Kast/Gelijkvloers

WIDTH: 2.25 m
LENGTH: 0.54 m
PERIMETER: 5.56 m

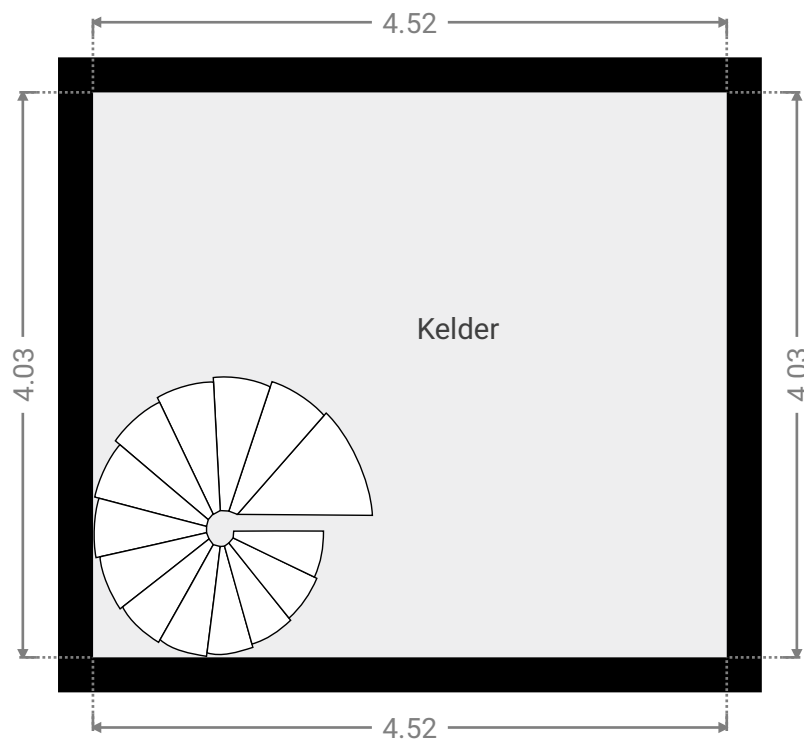


▼ Toilet/Gelijkvloers

WIDTH: 0.93 m
LENGTH: 1.35 m
PERIMETER: 4.56 m



▼ Kelder



▼ **Kelder/Kelder**

WIDTH: 4.52 m
LENGTH: 4.03 m
PERIMETER: 17.10 m

